



Sealing systems for sewers



SEB connection gasket

The flexible integrated gasket to connect clay pipes with 'K' connecting sleeves to concrete manholes as per DIN EN 295-1.

The **SEB** ring is integrated in the sleeve while the pipes are produced.

Benefits

- The **SEB** connection ring is firmly anchored in the concrete and thus forms a constructional unit with the manhole element.
- The **SEB** is an unproblematic and economic alternative to clay sleeve sockets.
- The **SEB** is securely integrated in the manhole and is, contrary to the sleeve, protected against damage.
- The leading angle of 15° facilitates the insertion of the clay pipe.
- The comparably hard SBR material of the **SEB** in connection with the soft sealing element of the clay spigot ensures the optimal and shrinkage-free connection.

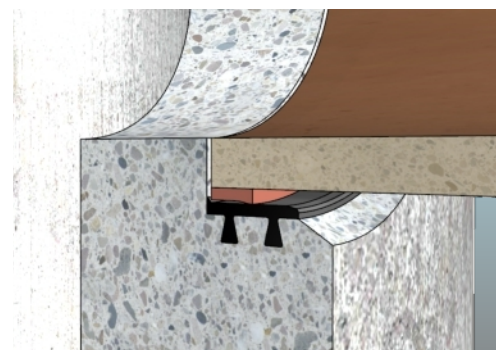
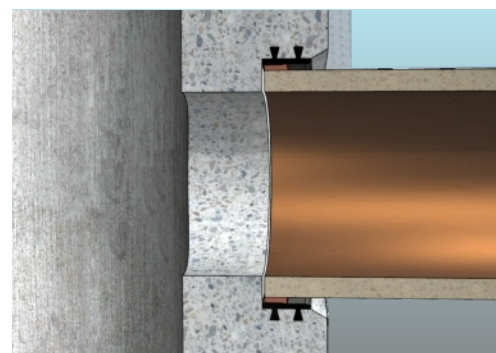
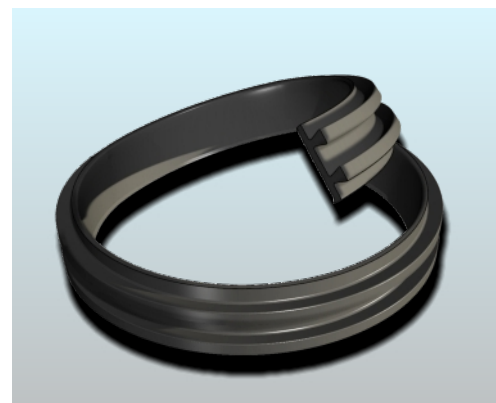
Material

SEB gaskets are fabricated from styrene butadiene rubber (SBR). The use of SBR has proven its worth in rainwater and wastewater applications due to its excellent sealing characteristics. The hardness is 50 IRHD N.

Note: We recommend using seals fabricated from nitrile butadiene rubber (NBR) for applications involving mineral fuels such as oils, petrol or similar.

Assembly

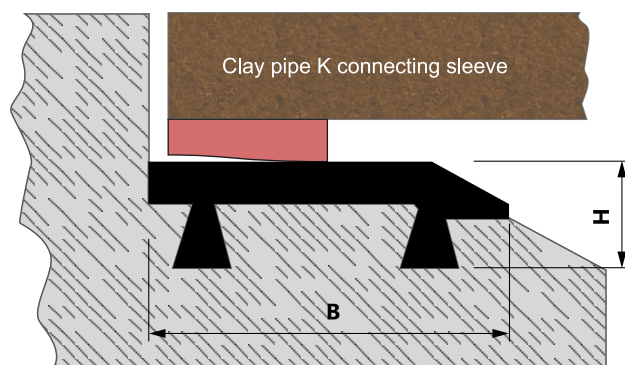
Apply lubricant to the pipe spigot end, centre and insert it.



SEB 58



SEB 58 (Built-in condition)



We can also produce special sizes for both profiles upon request. Please call us or send us an e-mail.

Contents such as technical specifications, values, and dimensions are given to the best of our knowledge, however, without any guarantee and liability. If not specified otherwise, dimensions are given in millimetres. Our General Terms and Conditions shall apply.