

Connector seal

The flexible **Connector** seal as per EN 681-1 and QR 4060 (FBS quality guideline) to connect PVC (KG) sewer pipes, clay pipes, and pipes made of many other materials.

Benefits

- Optimal to retroactively connect pipes made of various materials to concrete pipes and manholes by means of core drilling.
- Excellent sealing effect due to wide elastomer profile.
- Generally customary drill hole diameters, the proper drill bits are therefore usually available.

Material

The seals are made of Ethylene-Propylene-Diene rubber (EPDM) or Styrene-Butadiene rubber (SBR).

Due to their excellent properties the use of EPDM and SBR has proven to be successful in rainwater and wastewater applications.

Note: We recommend using seals fabricated from Nitrile-Butadiene rubber (NBR) for applications involving mineral fuels such as oils, petrol, or similar.

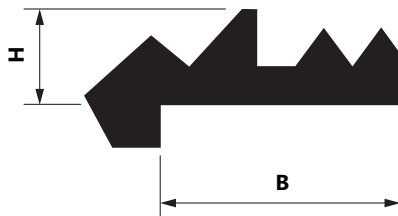
Assembly

Make the opening using a core drill with the corresponding diameter, keeping the drill rectangular to the surface and centred to the pipe axis.

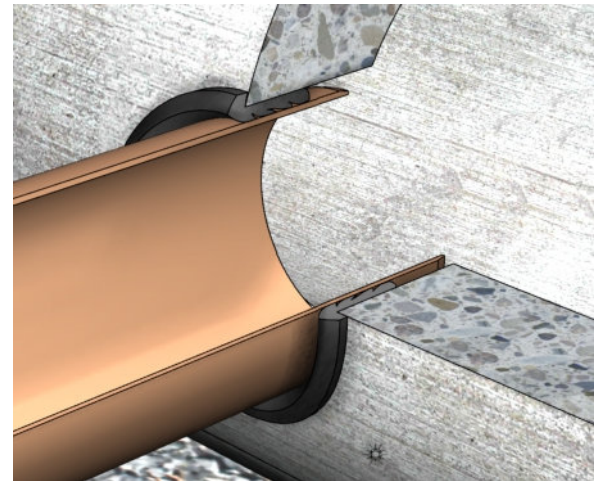
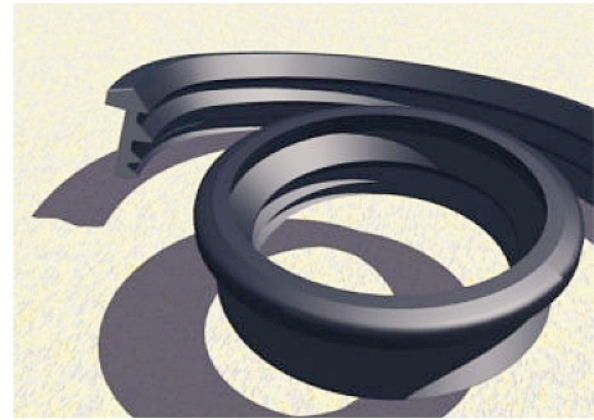
Deburr the outside edge of the hole and clean the hole. Check the inner surface of the hole for cavities and fractures and make them as good as required.

Insert the Connector seal without lubricant into the hole!

Apply a suitable lubricant to the outside of the pipe spigot to be connected, center and insert it.



H	B
12.5	44.0
16.0	40.0
20.0	50.0
23.0	50.0
26.0	50.0
32.0	50.0



Connector system

The **Connector** system, consisting of plastic sleeve and **Connector** seal is available in DN 150 and DN 200 for PVC as well as for clay N-pipe connections.

Apply a suitable lubricant to the outside of the **Connector** sleeve. Center the **Connector** sleeve and manually insert it at right angle until it reaches the stop of the sleeve. The stop must lie against the external collar of the **Connector** seal.

The **Connector** sleeve is marked (to aid the assembly) and must be aligned accordingly.

The pipe to be connected can now be connected to the **Connector** sleeve. The stop of the sleeve safely prevents the pipe to be inserted too far into the concrete pipe/manhole.

Note: The nominal diameter of the concrete pipe must at least be the double nominal size of the pipe to be connected.



Product range Connector / connection gaskets as per EN 681-1; SBR material, height 20 mm.

Sorted by pipes to be connected (selection)

DN pipe nominal size	Diameter pipe outside	Diameter hole	Type of seal
For PVC (KG) sewer pipes and form rings as per DIN 19534, HP PE and PVC pressure pipes			
	40	75	40/75
	50	75	50/75
	63	89	63/89
	75	101	75/101
100	110	138	110/138
125	125	151	125/151
150	160	186	160/186
150	180	206	180/206
200	200	226	200/226
200	225	251	225/251
250	250	276	250/276
250	280	306	280/306
300	315	341	315/341
300	355	382	356/382
400	400	426	400/426
450	450	476	450/476
500	500	526	500/526
560	560	586	560/586
600	630	656	630/656
Further sizes upon request			
For clay pipes and form rings as per DIN EN 295			
150	186	212	186/212
N	242	268	242/268
200			
N			
For GRP pipes DIN 16869 series 2			
150	168	194	168/194
200	220	246	220/246
250	272	298	272/298
300	324	350	324/350
400	427	453	427/453
For SGCI pipes			
150	170	196	170/196
200	222	248	222/248
250	274	300	274/300
300	326	352	326/352
400	429	455	429/455



Connector connection system, consisting of plastic sleeve and **Connector** seal
EN 681-1; SBR-material, height 20 mm || Sorted by pipes to be connected (selection)

DN pipe nominal size	Diameter pipe outside	Diameter hole	Type of seal
For SML - A 14 pipes as per DIN 19522, T1			
40	50	75	50/75
100	110	138	110/138
150	160	186	160/186
200	210	236	210/236
250	274	300	274/300
For FZ - pipes as per DIN 19850 class B			
150	168	194	168/194
200	224	250	225/251
250	278	304	278/304

Connector connection system, consisting of plastic sleeve and **Connector** seal

DN pipe nominal size	Diameter pipe outside	Diameter hole	Type of seal
Connector connection system to connect PVC (KG) sewer and HP PE pipes			
150	160	186	160/186
200	200	226	200/226
Connector connection system to connect clay pipes			
150 N	160	186	160/186
200 N	200	226	200/226

The hole is permitted with a tolerance of +/- 1.75 mm. Please observe the tolerances of the pipe materials!

The standard gasket size is 20 mm for all nominal pipe diameters in the list as given.

Further sizes and diameters (12.5 mm, 16 mm, 23 mm, 26 mm, and 32 mm) - also for outer diameters not listed here as well as seals fabricated from NBR (**resistant against e.g. mineral oils etc.**) and EPDM (**resistant against e.g. silage effluents**) are **available**. Please inquire separately.

Contents such as technical specifications, values, and dimensions are given to the best of our knowledge, however, without any guarantee and liability. If not specified otherwise, dimensions are given in millimetres. Our General Terms and Conditions shall apply.

