

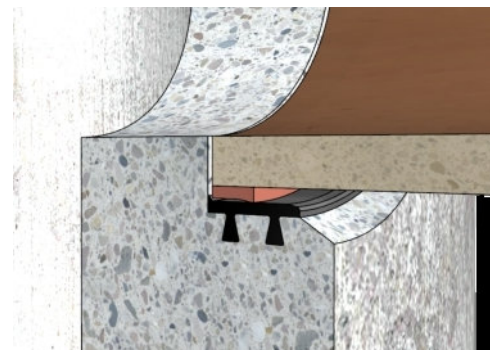
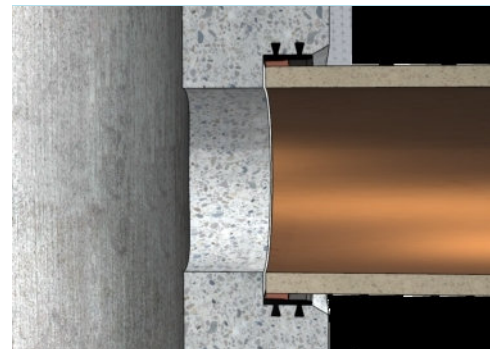
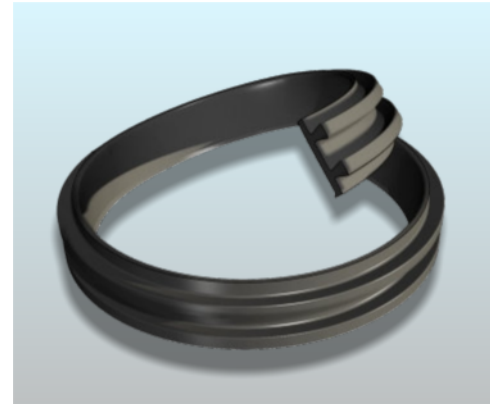
## SEB connection gasket

The flexible integrated gasket to connect clay pipes with 'K' connecting sleeves to concrete manholes as per DIN EN 295-1.

The **SEB** ring is integrated in the sleeve while the pipes are produced.

### Benefits

- The **SEB** connection ring is firmly anchored in the concrete and thus forms a constructional unit with the manhole element.
- The **SEB** is an unproblematic and economic alternative to clay sleeve sockets.
- The **SEB** is securely integrated in the manhole and is, contrary to the sleeve, protected against damage.
- The leading angle of 15° facilitates the insertion of the clay pipe.
- The comparably hard SBR material of the **SEB** in connection with the soft sealing element of the clay spigot ensures the optimal and shrinkage-free connection.



### The material

The gaskets are made of Ethylene-Propylene-Diene rubber (EPDM) or Styrene rubber (SBR). Due to their outstanding properties the use of EPDM and SBR has proven to be successful in the field of rainwater and wastewater.

#### Please note:

When used in conjunction with mineral fuels, such as oils, petrol, etc., we recommend the use of EPDM, petrol, etc., we recommend the use of seals made from Nitrile Butadiene rubber (NBR).

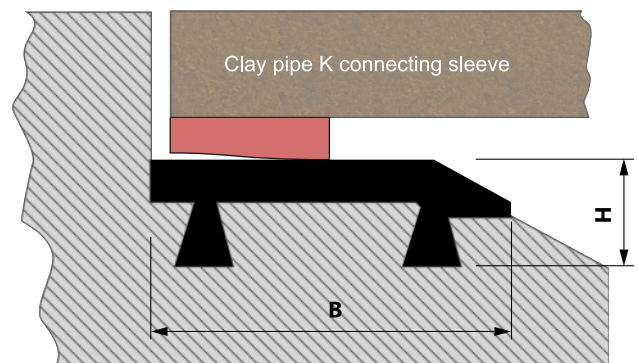
### Assembly

Apply lubricant to the pipe spigot end, center and insert it.

#### SEB-58 (Delivery dimensions)

H	B
20,0	58,0

#### SEB 58 (Built-in condition)



We can also produce special sizes for both profiles upon request. Please call us or send us an e-mail.

Contents such as technical specifications, values and dimensions are given to the best of our knowledge, however, without any guarantee and liability. If not specified otherwise, dimensions are given in millimeters. Our General Terms and Conditions shall apply.

